

Browser Control for MA-725F/MM-700F

1. Browser Control Outline

1.1. General Description

The browser Control feature allows password protected control of source, volume control and options on either an MA-725F or MM-700F from a browser on your PC (Internet Explorer, Google Chrome, Firefox, etc.). Smartphones (iOS or Android devices) using a browser function are also supported.

Note: When browser control is active, the front panel and any WP-700 AM controllers will be disabled.

1.2. System Requirement

- Any PC or MAC with a web browser. Any iOS or Android smart phone.
- Firmware update requires a PC running Win 7 or Win 10.
- The MA-725F or MM-700F will require the version of firmware (v2.05) or latest

2. Browser Operations

2.1. Browser Access Page

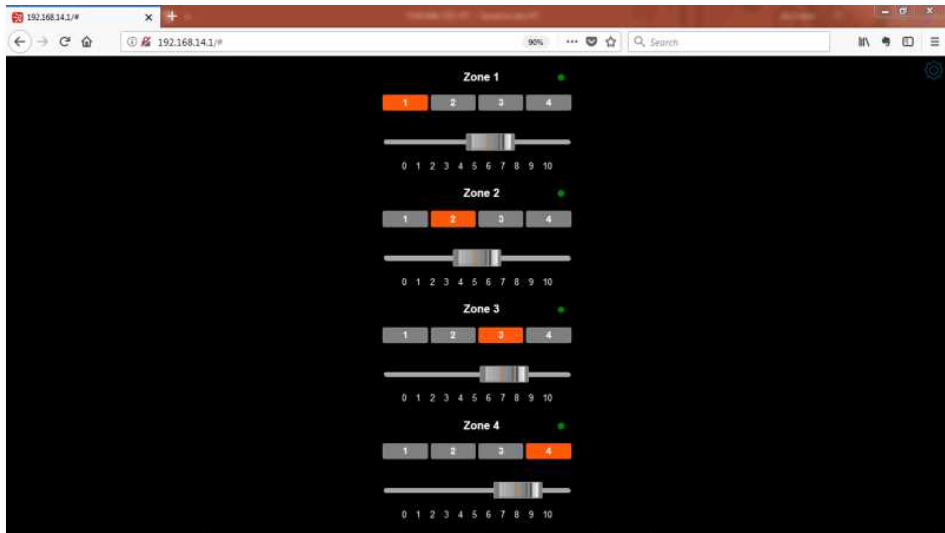
Point your browser to the mixer's default IP address of 192.168.14.1 (first make sure your computer's IP address is in the same range as the mixer 192.168.14.xxx). The default user name is "admin". The default password is "admin".



NOTE: IF YOU CANNOT CONNECT TO THE DEFAULT IP ADDRESS, YOU MAY NEED TO UPDATE THE SYSTEM FIRMWARE. REFER TO SECTION 3 INSTRUCTIONS ON PAGES 5 AND 6 OF THIS DOCUMENT.

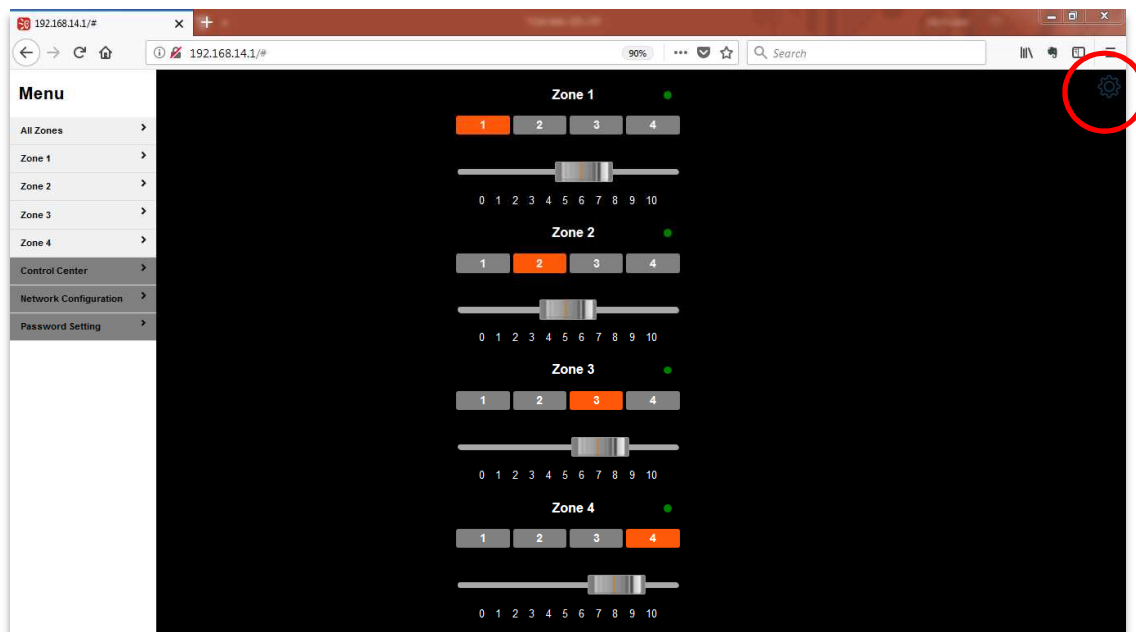
2.2. Operations

This is the mixer's landing page for the URL. It allows control of source selection and volume.



To get to the options menu, click on the Gear icon at the top right of the screen as indicate round mark in red color.

Control Screen with Menu



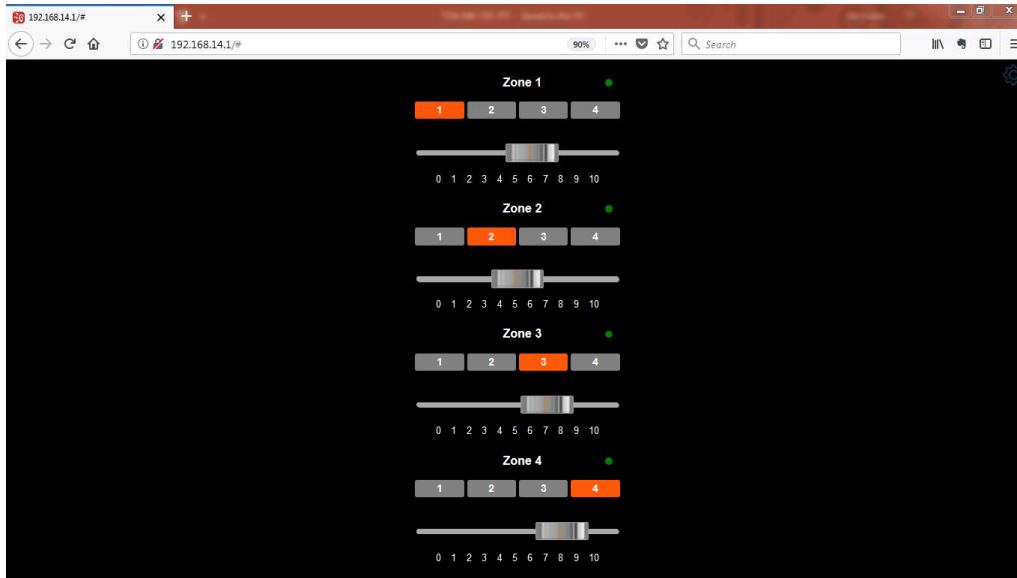
- All Zone:
View all zones on one page
- Zone: 1 – 4
View individual zones on one page

2.3. Control Center

Allows the user to turn Browser Control On or Off using the green “LED”. Green indicates Browser control is on. Grey indicates Browser control is off.

Volume and zone selection are also possible from this window.

Control Center Screen



2.4. Network Configuration

View or change the unit's IP address and view Firmware version

Network Configuration Screen

Firmware Version:	V2.04b
Build Date:	Mar 5 2018 00:08:00
Host Name:	MA-725F
MAC Address:	D8:80:39:18:A0:2A
IP Address:	192.168.14.1
Save Changes	

2.5. Password Setting

Up to 6 digits (Letters and numbers only. No special characters)

Password Setting Screen

Current Password:

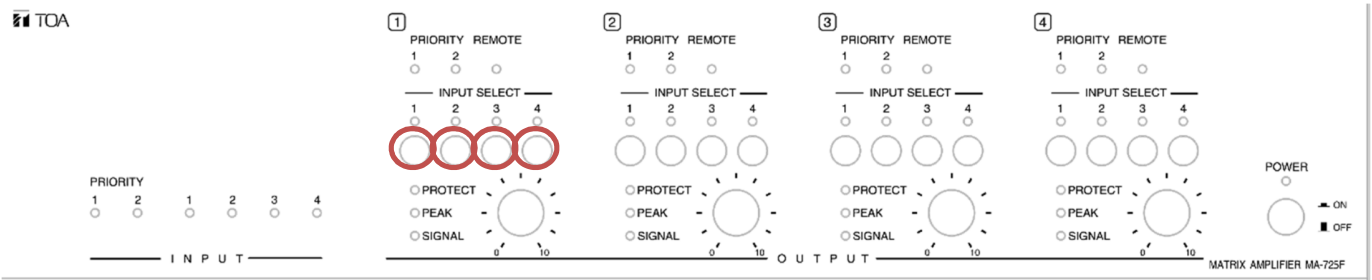
New Password:

Confirm Password:

Save Changes

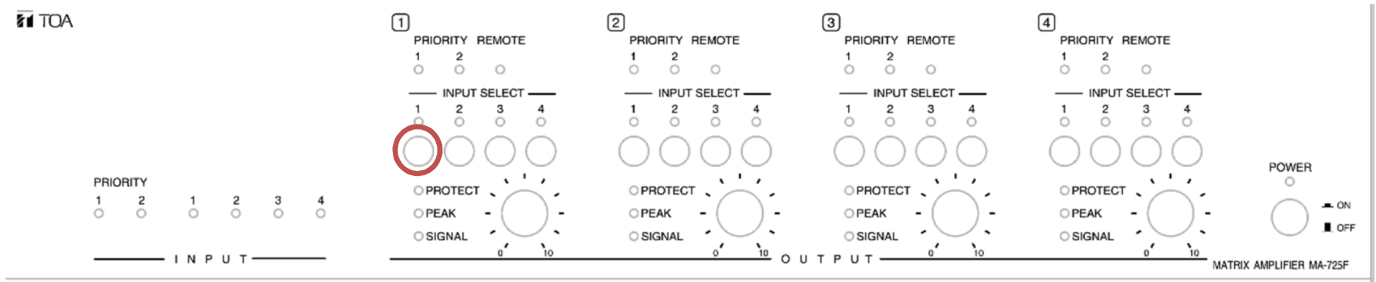
2.6. Browser Control Release

To return control to the wall controllers or front panel, hold down Input Select buttons 1-4 on Zone 1 for more than 4 seconds.

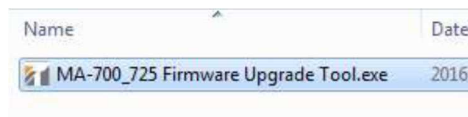


3. How to Update MA-725F/MM-700F Firmware

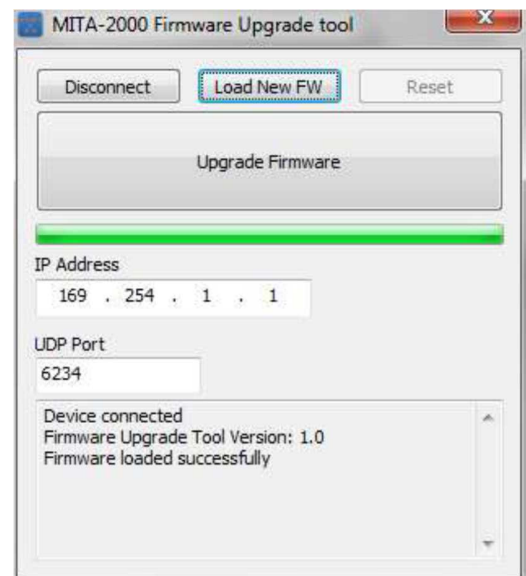
- Connect a straight Ethernet cable from your Windows PC to the MA-725F/MM-700F and turn the MA-725F/MM-700F Off.
- Push and hold the Input 1 select switch on Zone 1



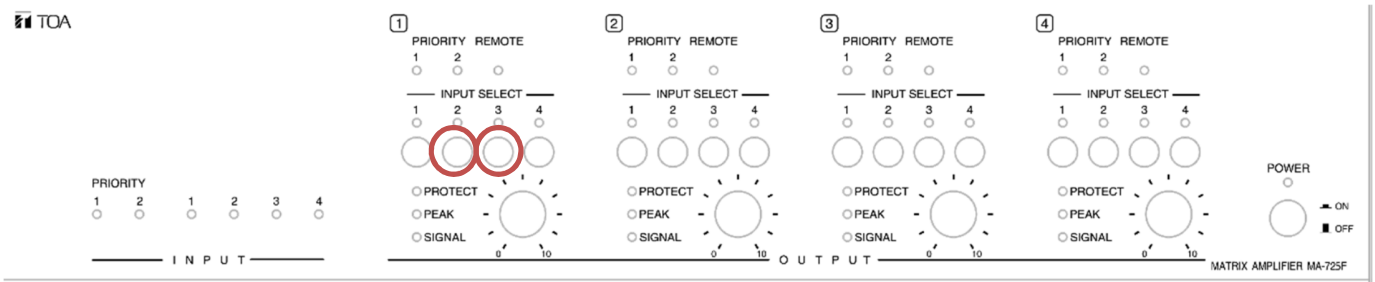
- Restart the MA-725F/MM-700F. When the Power LED starts flashing, release the input 1 select switch.
- You will see the Firmware Upgrade Tool. Click on the executable file and run the program.



- Press the “Connect” button to start communication with the MA-725F/MM-700F.
- Press “Load New FW” and select updating new firmware.
- Press “Upgrade Firmware” button to start the firmware update.
- If the update is successful, your screen will resemble the illustration to the right. >>
- Turn the MA-725F/MM-700F Off.



- Push and hold the input select switches 2 and 3 under Zone 1 and restart the MA-725F/MM-700F.



- The default IP address of the unit has been changed to 192.168.14.1.
- Use this IP address to reconnect to the MA-725F/MM-700F through your browser.