



OPERATIONS MANUAL

NETWORK AUDIO ADAPTERS

NX-100
NX-100S

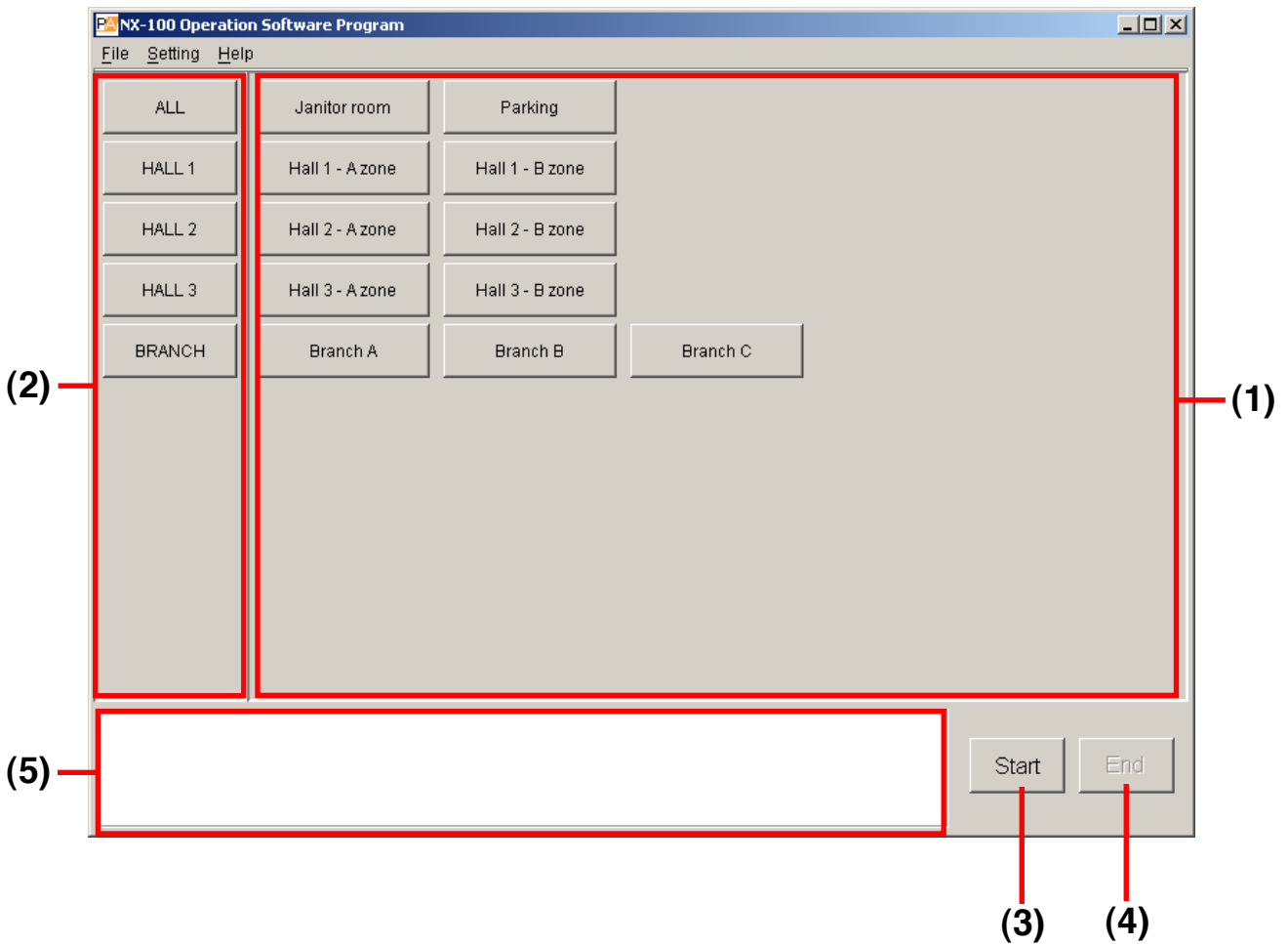
Thank you for purchasing TOA's Network Audio Adapters.
Please carefully follow the instructions in this manual to ensure long, trouble-free use of your equipment.

TABLE OF CONTENTS

| | | | |
|----------------------------------|---|---|---|
| 1. OPERATION SCREEN | 2 | 3. MAKING BROADCASTS | 4 |
| 2. MENU | 3 | 4. ERROR MESSAGES (EXAMPLES) | 7 |

1. OPERATION SCREEN

(Operation screen example)



(1) Selection Button

Selects broadcast locations.

(2) Group Button

Simultaneously selects two or more Selection buttons.

(3) Start Button

Starts the broadcast selected with the Selection or Group button.
The button is not displayed when set to disable.

(4) End Button

Quits broadcasts.

(5) Message Display Area

Displays responses to operations or error contents.

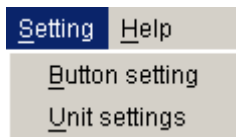
2. MENU

2.1. File



Exit: Exits the software program in use.

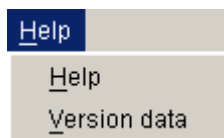
2.2. Setting



Button setting: Not used during operation. (Used for settings only. Entry of both system name and password is required to perform the settings.)

Unit settings: Not used during operation. (Used for settings only. Entry of both system name and password is required to perform the settings.)

2.3. Help

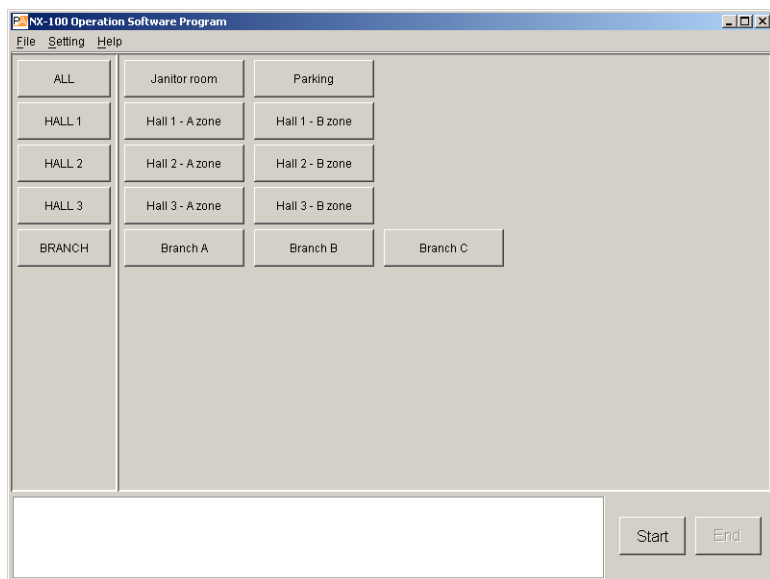


Help: Displays help contents.

Version data: Indicates the version number of the software program in use.

3. MAKING BROADCASTS

Step 1. Start the NX-100 Operation Program by double-clicking on its desktop shortcut or the "nx100_control.jar" application created in the program's installed folder.
The operation screen is displayed.
(Operation screen example)



Step 2. Select broadcast locations, then establish connection to the NX-100 or NX-100S units used for broadcasting.
On-screen button operation and its subsequent software operation differ depending on whether or not the Start button is displayed at the lower right of the screen.

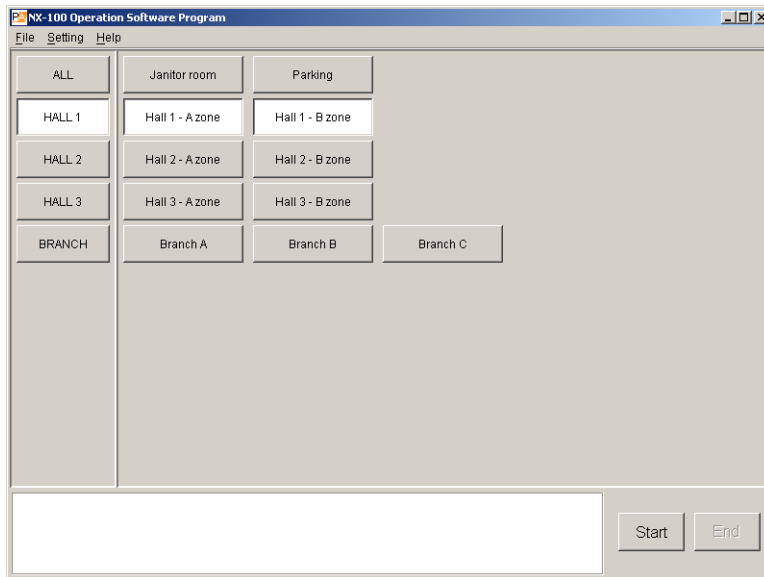
2-1. When Start button is displayed, refer to [p. 5](#).

2-2. When no Start button is displayed, refer to [p. 6](#).

2-1. When Start button is displayed;

- (1) Press either the Selection or Group button to select broadcast locations.

Multiple locations can be simultaneously selected. Selected buttons are highlighted in white. When the Group button is pressed, all the Selection buttons programmed into the Group button are also highlighted in white.

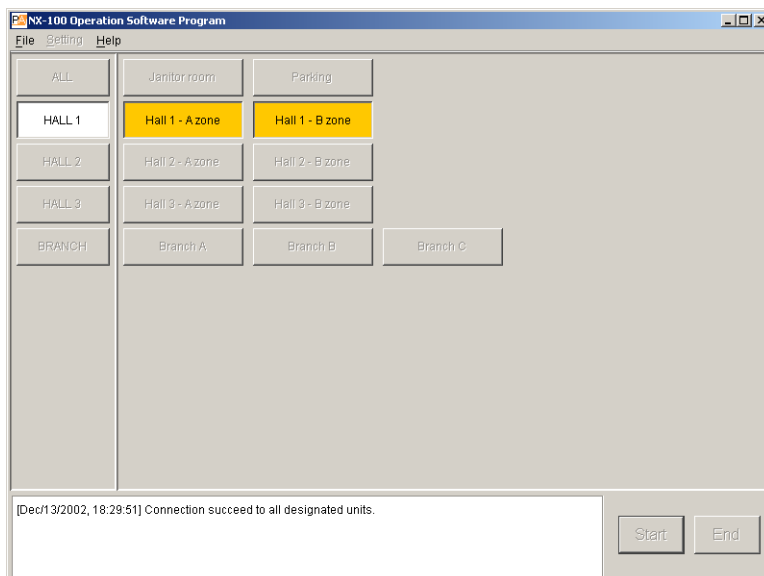


- (2) Press the Start button.

Connection to the pressed Selection button's programmed NX-100 and NX-100S units begins.

If all units are connected, the indication "Connection succeed to all designated units.*)" is displayed in the message display area, and the corresponding Selection button changes color to orange.

* When only a portion of the programmed units is connected, the indication "Connection failure to some designated units." is displayed.



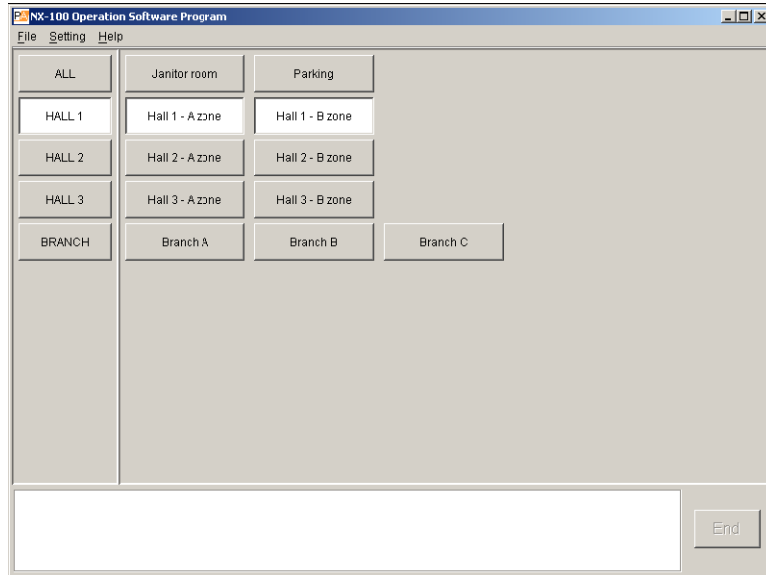
NX-100 and NX-100S units that are not connected are displayed in the message display area. Depending on the displayed messages, perform operation again after temporarily terminating the program and waiting a short time, or after correcting any setting- or unit-related problems. The Selection buttons change to orange if a connection is made to at least one of the NX-100 or NX-100S units programmed for that button.

2-2. When no Start button is displayed;

Press either the Selection or Group button to select broadcast locations.

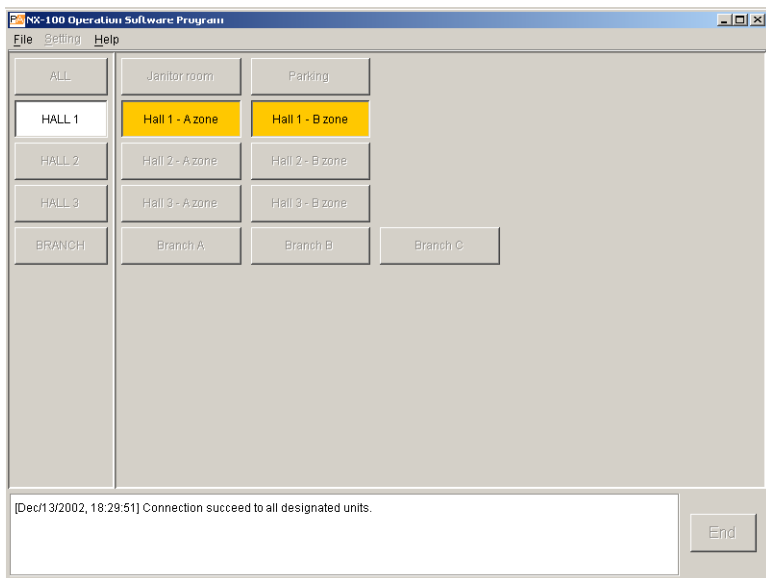
Only one of the Selection and Group buttons can be selected. Selected buttons are highlighted in white. When the Group button is pressed, all the Selection buttons programmed into the Group button are also highlighted in white.

Connection to the pressed Selection button's programmed NX-100 and NX-100S units begins.



If all units are connected, the indication "Connection succeed to all designated units.*" is displayed in the message display area, and the corresponding Selection button changes color to orange.

* When only a portion of the programmed units is connected, the indication "Connection failure to some designated units." is displayed.



NX-100 and NX-100S units that are not connected are displayed in the message display area. Depending on the displayed messages, perform operation again after temporarily terminating the program and waiting a short time, or after correcting any setting- or unit-related problems. The Selection buttons change to orange if a connection is made to at least one of the NX-100 or NX-100S units programmed for that button.

Step 3. Broadcasting can begin when the "Connection succeed to all designated units." indication is displayed.

Step 4. Press the End button after the broadcast is completed.

Step 5. Select [File] → [Exit] to quit the NX-100 Operation program.

4. ERROR MESSAGES (EXAMPLES)

| Message | Points to Check |
|--|--|
| <ul style="list-style-type: none">• "OO" connection failure. - Maximum number of connectable PCs exceeded.• No start. - Designated unit busy.• "OO" contact output "XX" already ON.• "OO" contact output "XX" turned OFF by other contact or PC. | Quit operations, and then restart after a few minutes. |
| <ul style="list-style-type: none">• "OO" connection failure.• Connection failure to all designated units.• "OO" connection failure - Incomplete broadcast.• No broadcast. - Connection failure to all units.• Interrupted broadcast to "OO".• Interrupted broadcast from "OO".• "OO" connection failure. - Invalid system name.• No start. - Invalid broadcast setting contents.• "OO" contact output "XX" set to OFF. | Contact system management personnel. |

Note

In the above messages, "OO" indicates a unit's name and IP address, and "XX" indicates the channel number.

